

**CONCEPT OF FERDINAND VON
RICHTHOFEN[1833-1905](6TH
SEM.GEOA)**

**RITABRATA MUKHOPADHYAY, ASSOCIATE
PROFESSOR OF GEOGRAPHY, DEPT. OF
GEOGRAPHY, AHFSM, DOMJUR, HOWRAH (**
Date & time of online class: 08.05.2021{
12.30 pm -1.30 pm })

MAIN TOPICS OF DISCUSSION

- A. EARLY LIFE.
- B. EARLY CAREER IN GEOLOGICAL EXPLORATION.
- C. CONCEPT OF “FUHRER FUR FORSCHUNGSREISENDE”(1886).
- D. NEW CONCEPT OF “ERDKUNDE”.
- E. DIFFERENCES BETWEEN “GENERAL “ & “SPECIAL GEOGRAPHY”.
- F. TO REVIVE THE CONCEPT OF UNITY OF EARTH SURFACE.

EARLY LIFE

- 1. EMPHASIZE ON FIELD OBSERVATION.
- 2. GEOLOGICAL FIELD EXPEDITION ON ALPS AND CARPATHIAN REGION.
- 3. RESEARCH ON FORMATION OF SEDIMENTARY ROCK STRATA.
- 4. GEOLOGICAL EXPEDITION ON CHINA IN 1860 WITH CREATION OF GEOMORPHIC ATLAS OF CHINA.
- 5. MAIN OBSERVATION OF FORMATION OF LOESS DEPOSITS AT NORTHERN CHINA.
- 6. HE PROVIDED DETAILED ACCOUNT OF LAND & PEOPLE OF SOUTH CHINA.
- 7. GEOMORPHIC EXPEDITION AT CALIFORNIA.

CONCEPT OF “ FUHRER FUR FORSCHUNGSREISENDE”(1886).

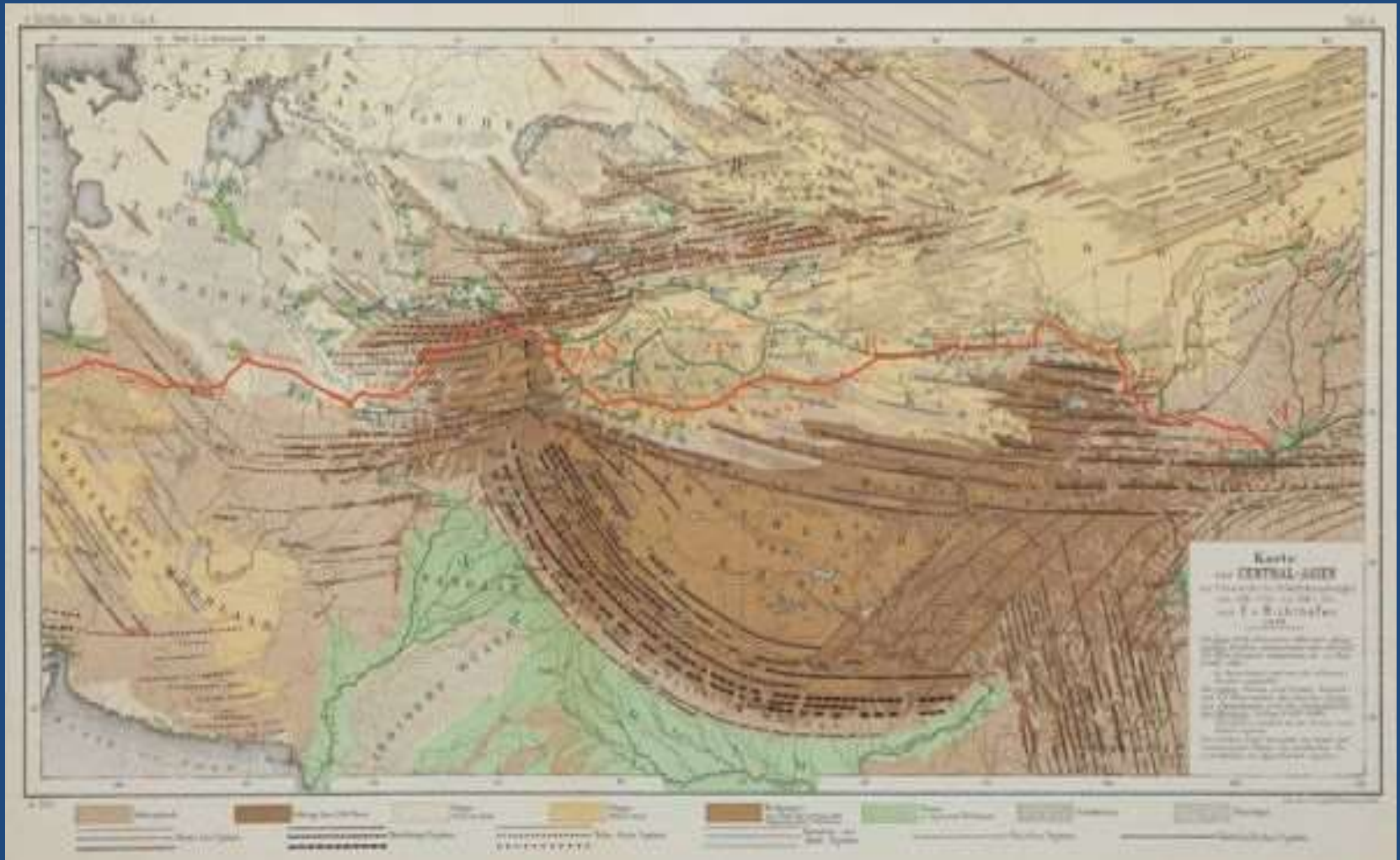
- **A. APPOINTED AS PROFESSOR OF GEOGRAPHY IN THE UNIVERSITY OF BERLIN IN 1875 AND THEN AT UNIVERSITY OF BONN IN 1877. HE MOVED TO UNIVERSITY OF LEIPZIG IN 1878 AND THEN MOVED AGAIN TO BERLIN IN 1886.**
- **B. CONCEPT OF “ FUHRER FUR FORSCHUNGSREISENDE”(1886) AS A GUIDE TO SCIENTIFIC EXPLORERS , WAS MORPHOLOGY OF EARTH’S SURFACE FEATURES. THIS HAS THREE PARTS:**
 - **1. Field observations & its relevance to Physical Geography & Geology.**
 - **2. The 2nd part provides a systematic interpretation of the processes involved in the shaping of the surface of the earth, with classification of landforms on the basis of process.**
 - **3. The 3rd part deals with the observations of the soils, rocks and mountain structures.**



NEW CONCEPT OF “ERDKUNDE”.

- 1. INAUGURAL ADDRESS AT THE UNIVERSITY OF LEIPZIG(1883)- “ CHOROLOGICAL CONCEPTION OF GEOGRAPHY”.
- 2. “ GEOGRAPHY IS THE SCIENCE OF THE EARTH’S SURFACE & THINGS AND PHENOMENA THAT ARE CAUSALLY INTERRELATED WITH IT”.
- 3. “GEOGRAPHY MAY BE PURSUED THROUGH THE MOST DETAILED STUDY OF THE SMALLER AREAS, AND THROUGH THE COMPARATIVE STUDY OF LARGER AREAS”.
- 4. “EXPLORATION OF THE RELATIONSHIP OF MAN TO THE PHYSICAL EARTH & BIOTIC FEATURES”.

FIRST SILK ROUTE MAP BY RICHTHOFEN



1ST COAL MINE MAP OF CHINA BY RICHTHOFEN



1ST GEOLOGICAL MAP OF AUSTRIA BY RICHTHOFEN



DIFFERENCES BETWEEN “GENERAL “ & “SPECIAL GEOGRAPHY”.

- 1. MATERIAL DIFFERENCES.
- 2. FORCES OF CHANGE IN DIFFERENCES.
- 3. FORCES OF CAUSES OF DIFFERENCES.
- 4. MOVEMENT OF DIFFERENCES.
- 5. DESCRIPTIVE AND SYNTHETIC METHODOLOGY.
- 6. TWO APPROACHES OF GEOGRAPHY=
 - A) Synthetic or Special Geography,
 - B) Chorography & Chorology.

TO REVIVE THE CONCEPT OF UNITY OF EARTH SURFACE.

- **A. TO REVIVE THE CONCEPT OF UNITY OF THE EARTH SURFACE.**
- **B. RELATIONSHIP BETWEEN PHYSICAL GEOGRAPHY WITH ACTIVITIES OF MAN.**
- **C. INFLUNCE OF NATURE OF LAND ON CULTURE OF MAN.**
- **D. CONCEPT OF ANTHROPOGEOGRAPHY.**

EVALUATION OF WORKS OF RICHTHOFEN

- **A. “GEOGRAPHICAL STUDY BASED ON OBSERVATION FROM THE SMALLEST SEGMENTS OF THE EARTH”’S SURFACE.**
- **B. DIFFERENT METHODS OF STUDY IN AREAS OF DIFFERENT SIZE.**
- **C. INTEGRATED APPROACH IN GERMAN GEOGRAPHY.**

THANK YOU

